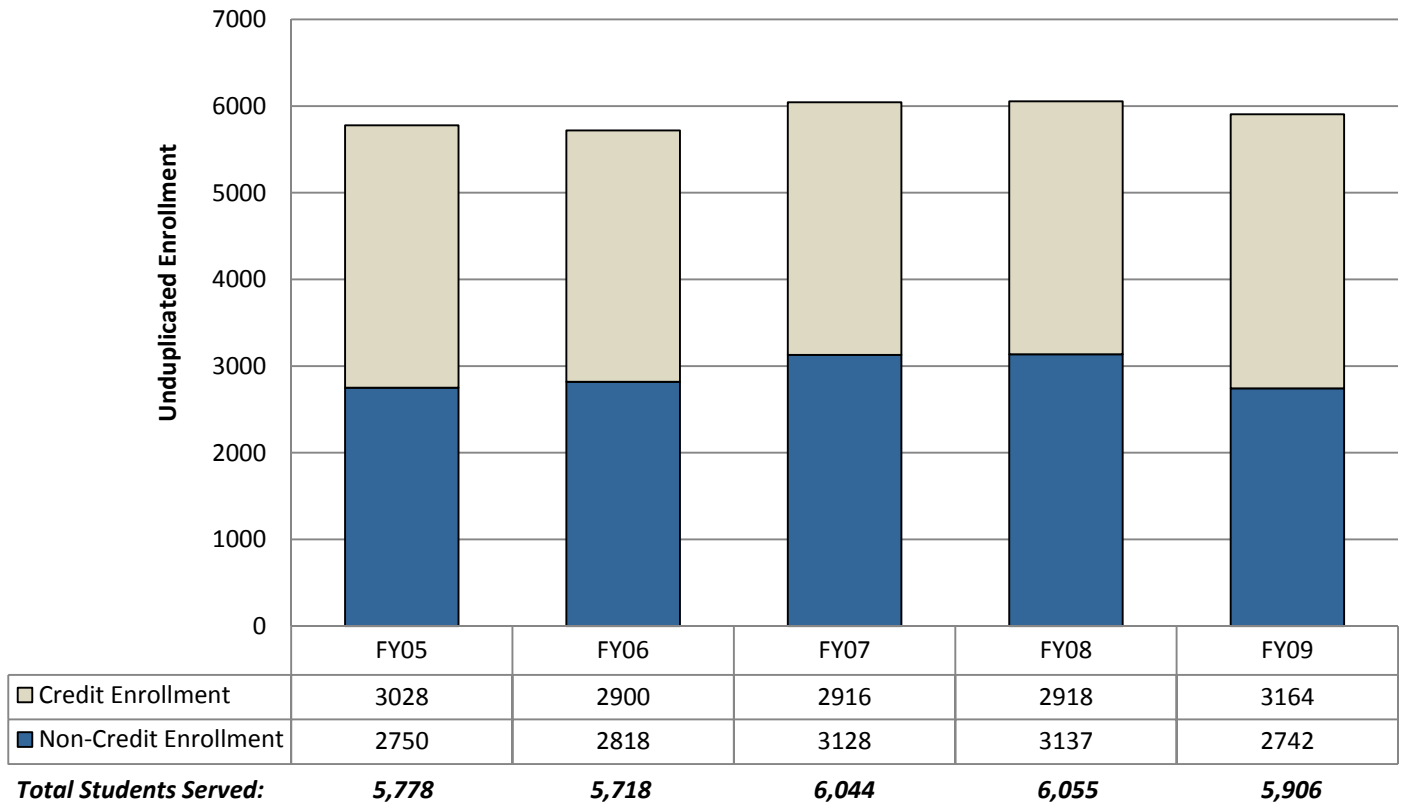


GCC At-a-Glance

Annual Enrollment, Retention & Course Completions

- Annual unduplicated credit enrollment increased by 8% between academic year 2007-2008 and academic year 2008-2009. Non-credit enrollment, however, fell due to the worsening economic climate. This was particularly the case for personal enrichment workshops.
- Fall to fall retention increased by 5% from last year. Older students (25 years and older) now have a retention rate comparable to traditional aged students (49% retained fall to fall).
- Overall, students aged 25 and older have a higher course completion (a grade of C or better) in gateway courses.

Figure 1: Annual Credit & Non-Credit Enrollment

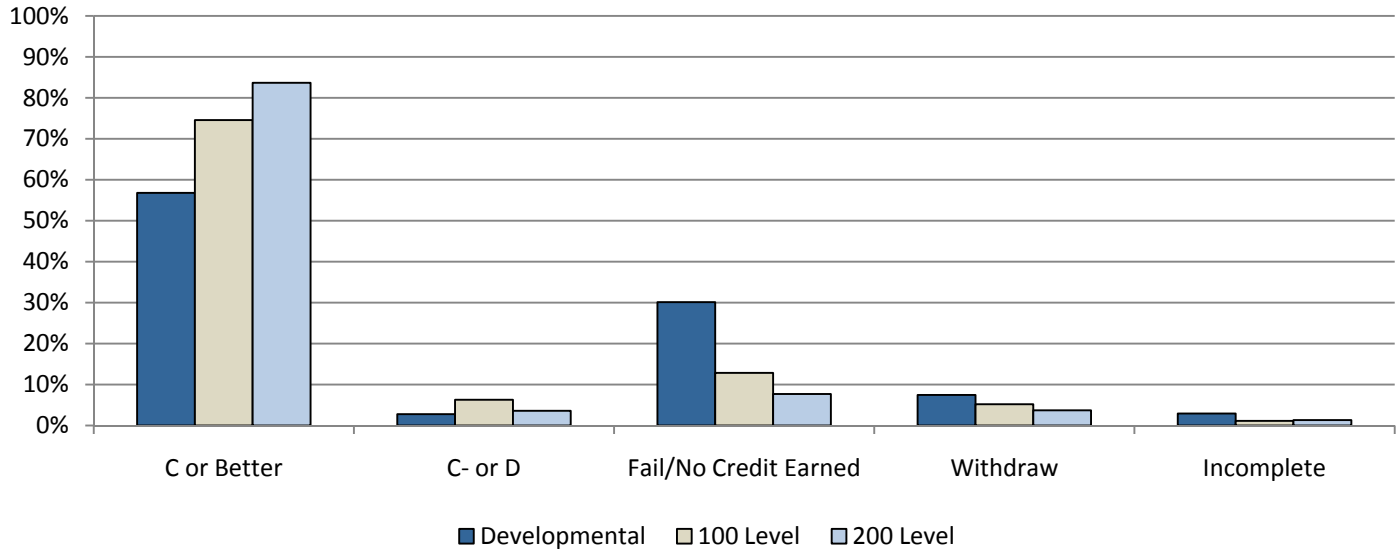


Course Completions

Table 1: Academic Year 2008-2009 Course Completions by Level

Course Level:	C or Better	C- or D	Fail/No Credit Earned	Withdraw	Incomplete
Developmental	57%	3%	30%	7%	3%
100 Level	75%	6%	13%	5%	1%
200 Level	84%	4%	8%	4%	1%
All Credit Courses:	75%	6%	13%	5%	1%

Figure 2: Academic Year 2008-2009 Course Completions by Level

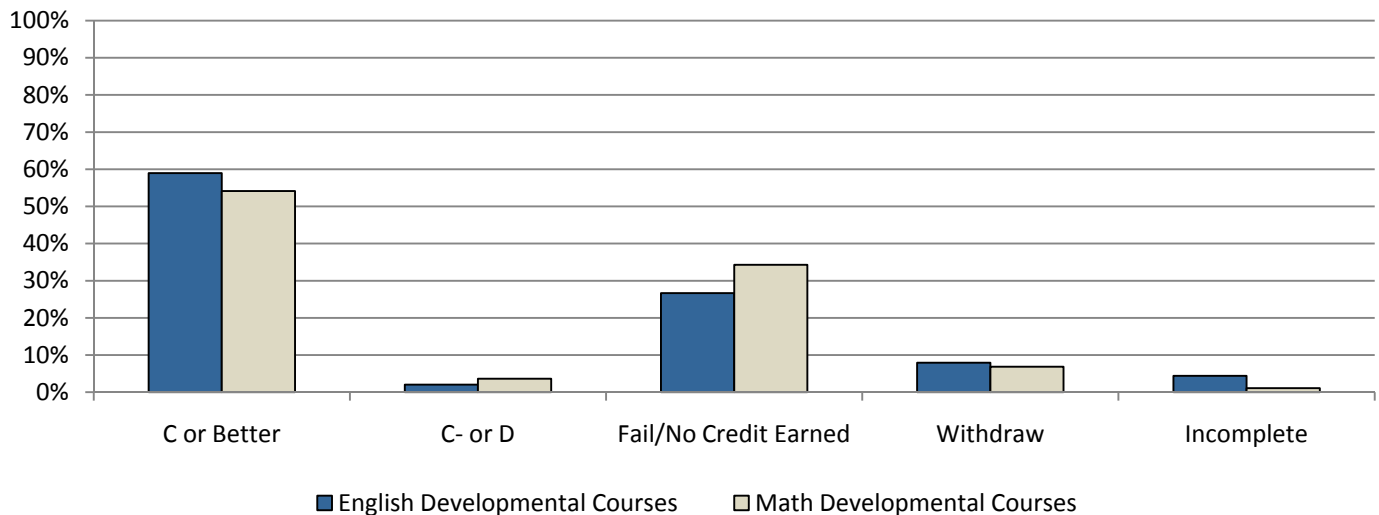


Developmental Course Outcomes

Table 2: Academic Year 2008-2009 Developmental Course Outcomes

	C or Better	C- or D	Fail/No Credit	Withdraw	Incomplete
English Developmental Courses*	59%	2%	27%	8%	4%
Math Developmental Courses**	54%	4%	34%	7%	1%
Total for Developmental Courses:	57%	3%	30%	7%	3%

Figure 3: Academic Year 2008-2009 Developmental Course Outcomes



* Includes ENG090 & COL090 ** Includes MAT090 &

Gateway Course Outcomes

Gateway courses are selected based on research at “Achieving the Dream” colleges. These are GCC college-level courses with the highest total enrollment.

Table 3: Gateway Course Completions

	AY2008-2009 % C or Better	10 Year (AY99-AY08) % C or Better
Psychology 101	74%	72%
English 101	65%	70%
Sociology 101	66%	65%
English 112	75%	74%
Biology 195	57%	62%
English 116	82%	81%
Math 117	92%	73%
Business 111	62%	69%
Psychology 217	85%	86%

Figure 4: Gateway Course Completions

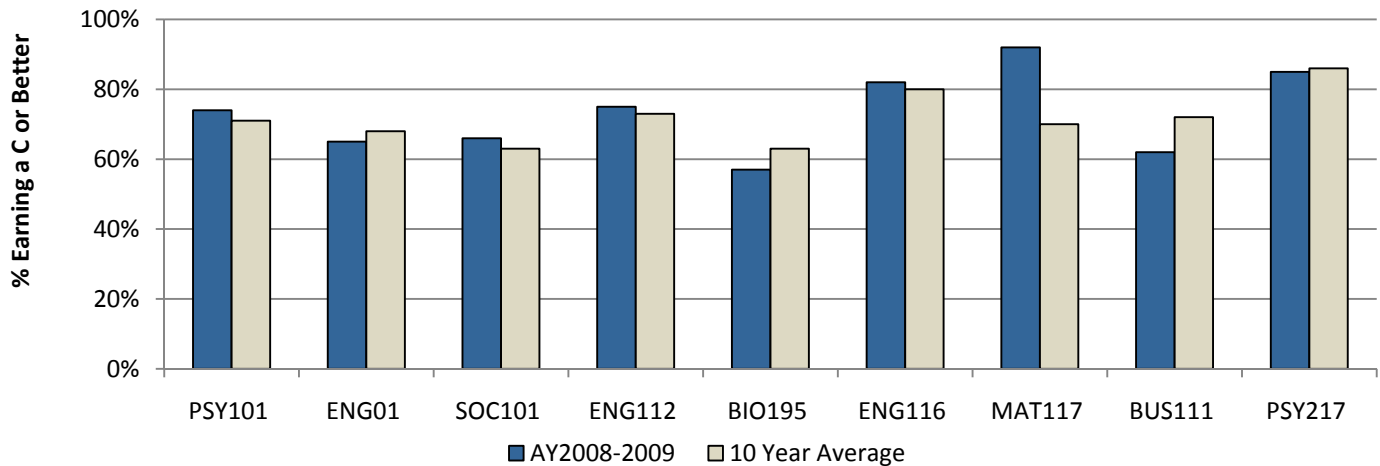
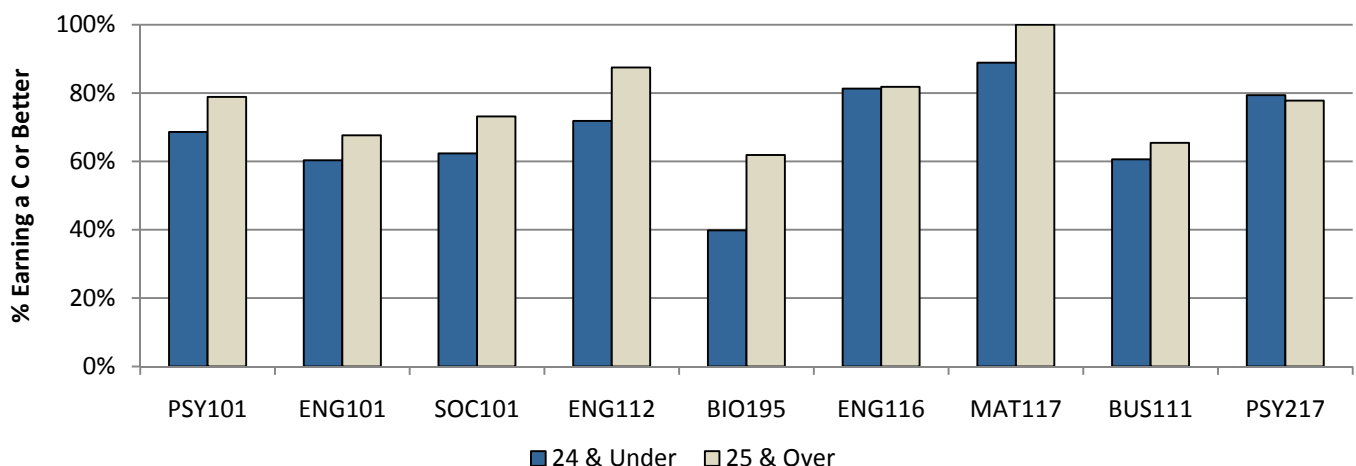


Table 4: Gateway Course Completion by Age, AY2008-2009

	Age 24 and Under % C or Better	Age 25 and Over % C or Better
Psychology 101	69%	79%
English 101	60%	68%
Sociology 101	62%	73%
English 112	72%	88%
Biology 195	40%	62%
English 116	81%	82%
Math 117	89%	100%
Business 111	61%	65%
Psychology 217	79%	78%

Figure 5: Gateway Course Completion by Age, AY2008-2009



Persistence (Fall to Spring) & Retention (Fall to Fall)

Table 5: Persistence (Fall to Spring) & Retention (Fall to Fall)*

	Fall 2008 to Spring 2009 Persistence	Fall 2008 to Fall 2009 Retention
All Students	1,583 (68%)	1,009 (50%)
Age 24 & Under	886 (69%)	580 (51%)
Age 25 & Older	697 (68%)	429 (48%)
2008 First-Time, Full-Time Cohort**	152 (78%)	112 (57%)
2008 First-Time, Part-Time Cohort **	78 (60%)	55 (42%)

* Graduates are removed from persistence & retention calculations.

** Includes only degree seeking students.

Figure 6: Persistence (Fall to Spring) & Retention (Fall to Fall)*

