

GCC At-a-Glance

Fall 2009 Student Profile

The fall 2009 credit enrollment at Greenfield Community College is 2,546. This is a 10% increase from fall 2008, and the largest fall enrollment since 1992. The full-time equivalent enrollment (FTE) based on 15 credit hours increased to 1,562, up 14% from fall 2008.

- Nearly 90% of full-time students are under age 25.
- Enrollment of men increased 21% from fall 2008. Almost 40% of all men on campus are new to GCC and 25% are new to college.
- The proportion of full-time students increased by 4%.

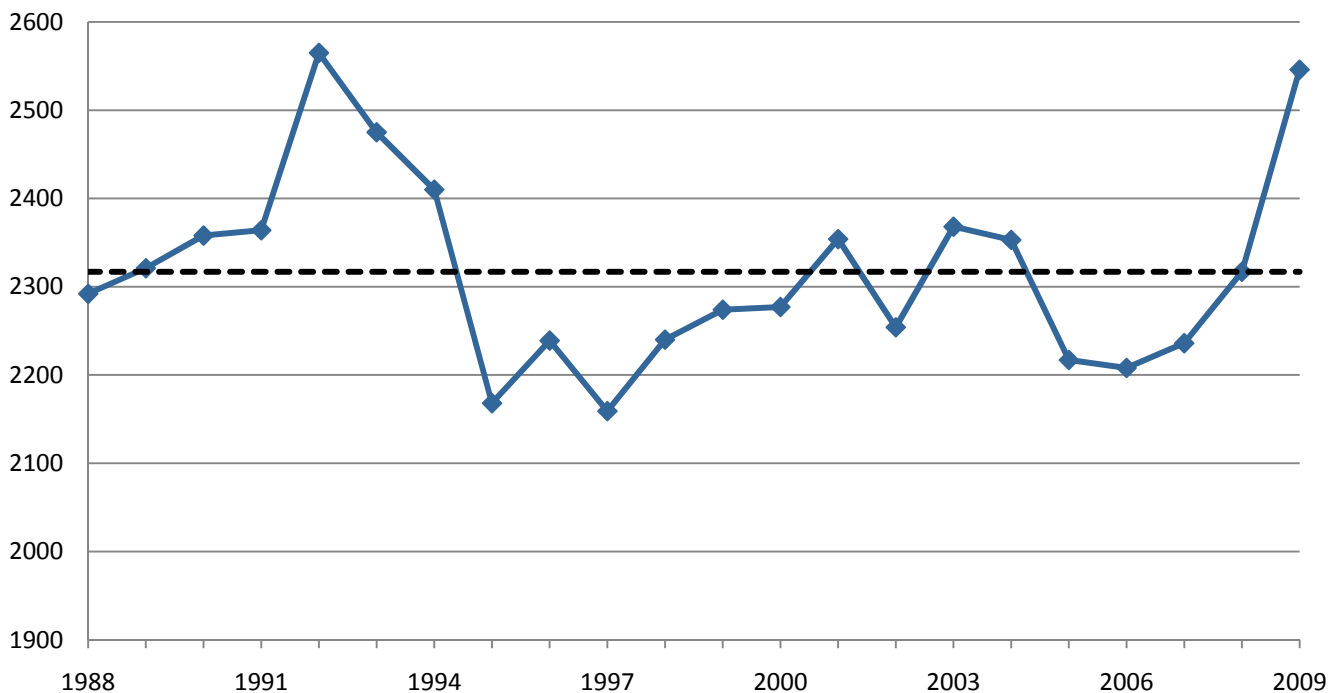
Fall Enrollment 1988-2009

Table 1: Fall Enrollment 1988-2009

Year	Number of Students	Year	Number of Students
1988	2,292	1999	2,274
1989	2,321	2000	2,277
1990	2,358	2001	2,354
1991	2,364	2002	2,254
1992	2,565	2003	2,368
1993	2,475	2004	2,353
1994	2,410	2005	2,217
1995	2,168	2006	2,208
1996	2,239	2007	2,236
1997	2,159	2008	2,317
1998	2,240	2009	2,546

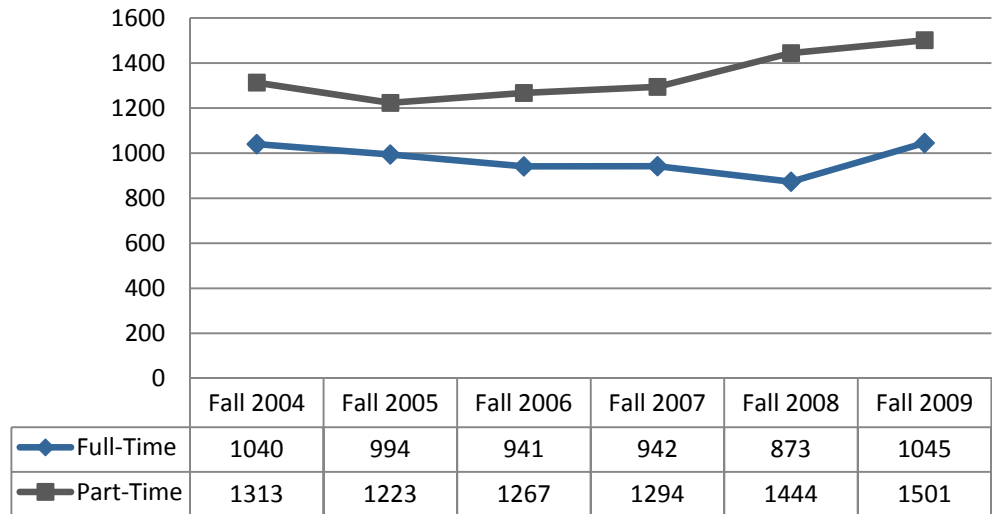
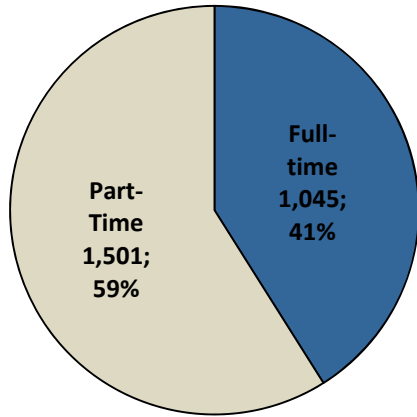
Figure 1 presents GCC fall enrollment from 1988 to 2009; average enrollment is 2,318 students over this period with a standard deviation of 109.

Figure 1: Fall Enrollment 1988-2009 & Average Enrollment



Enrollment Status (Full-Time & Part-Time Students)

Figure 2: Enrollment Status for Fall 2009 & Trend



The proportion of full-time students (12 or more credits) increased by 4% in fall 2009.

Persistence (Spring to Fall) & Retention (Fall to Fall)

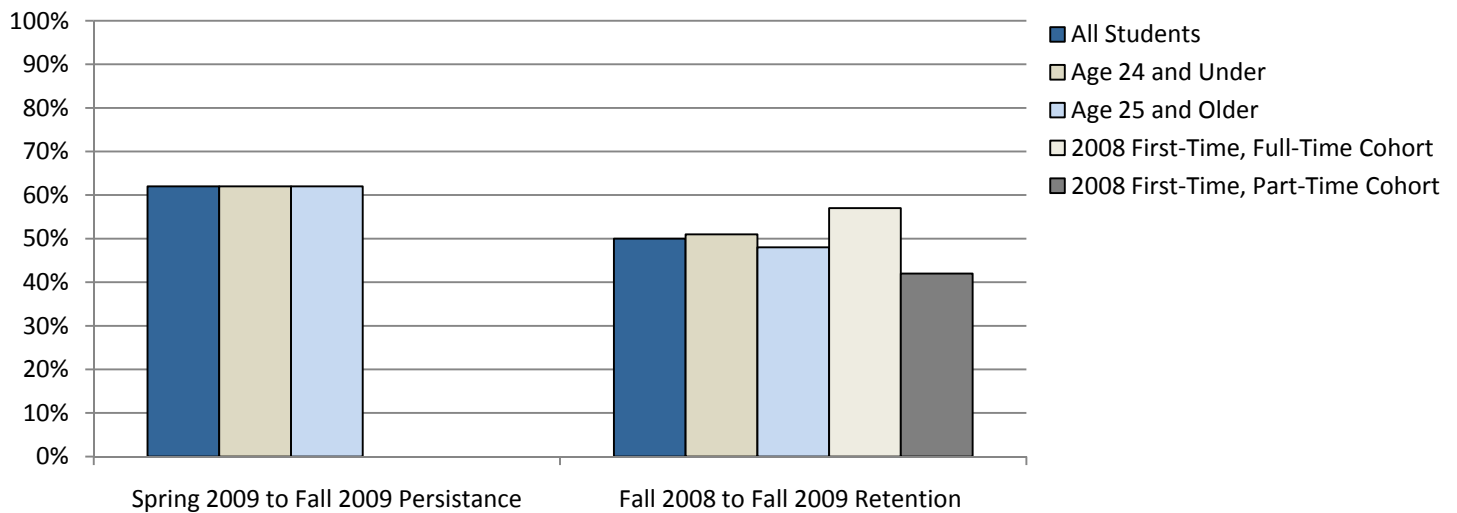
Table 2: Persistence (Spring to Fall) & Retention (Fall to Fall)*

	Spring 2009 to Fall 2009 Persistence	Fall 2008 to Fall 2009 Retention
All Students	1,228 (62% of Spring '09)	1,009 (50% of Fall '09)
Age 24 & Under	680 (62% of Spring '09)	580 (51% of Fall '09)
Age 25 & Older	548 (62% of Spring '09)	429 (48% of Fall '09)
2008 First-Time, Full-Time Cohort**	N/A	112 (57% of Fall '09)
2008 First-Time, Part-Time Cohort **	N/A	55 (42% of Fall '09)

* Graduates are removed from persistence & retention calculations.

** Includes only degree seeking students.

Figure 3: Persistence (Spring to Fall) & Retention (Fall to Fall)*



Student Demographics

Gender:

Significantly more men enrolled at GCC in fall 2009 compared with fall 2008. There is a 3% increase in the proportion of men attending GCC, a change from 38% of the total student body in fall 2008 to 41% in fall 2009.

Table 3: Enrollment Status by Gender

	Full-Time	Part-Time	Total	Change from fall 2008
Men	544	553	1,054	+181 men (+21%)
Women	501	948	1,492	+ 60 women (+4%)

Figure 4: Total Fall 2009 Enrollment by Gender

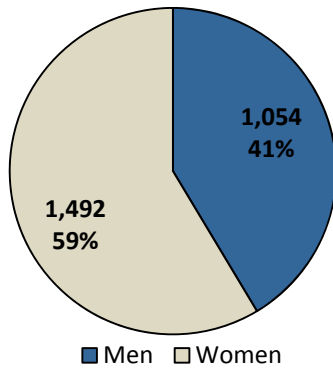


Figure 5: Enrollment Status for Men

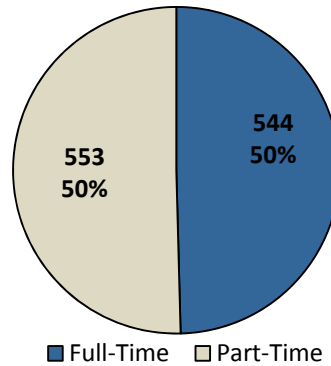
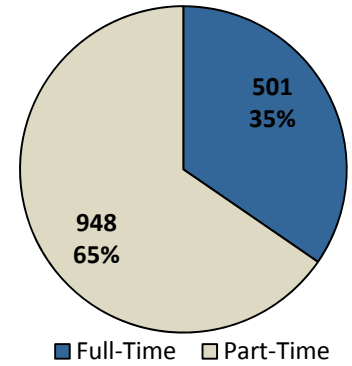


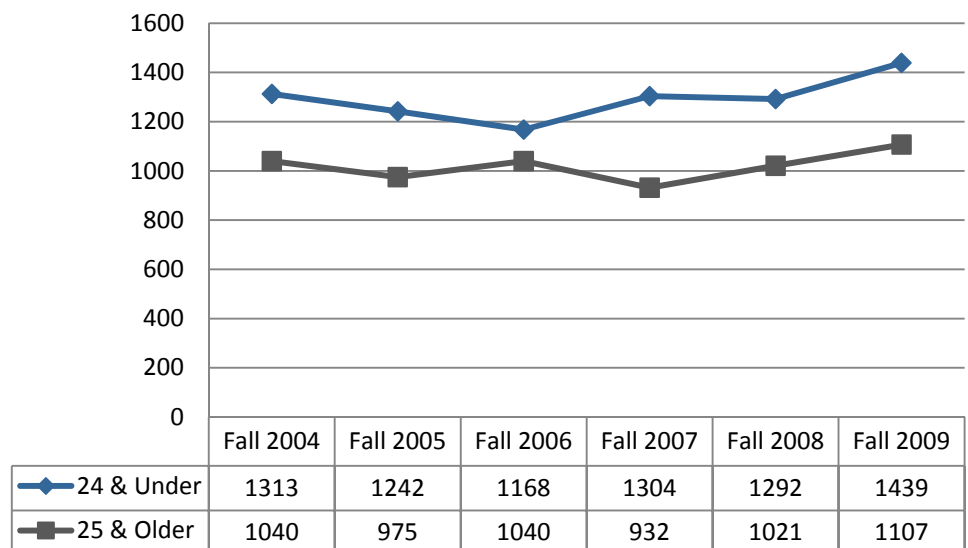
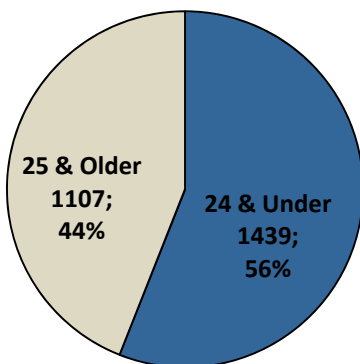
Figure 6: Enrollment Status for Women



Age:

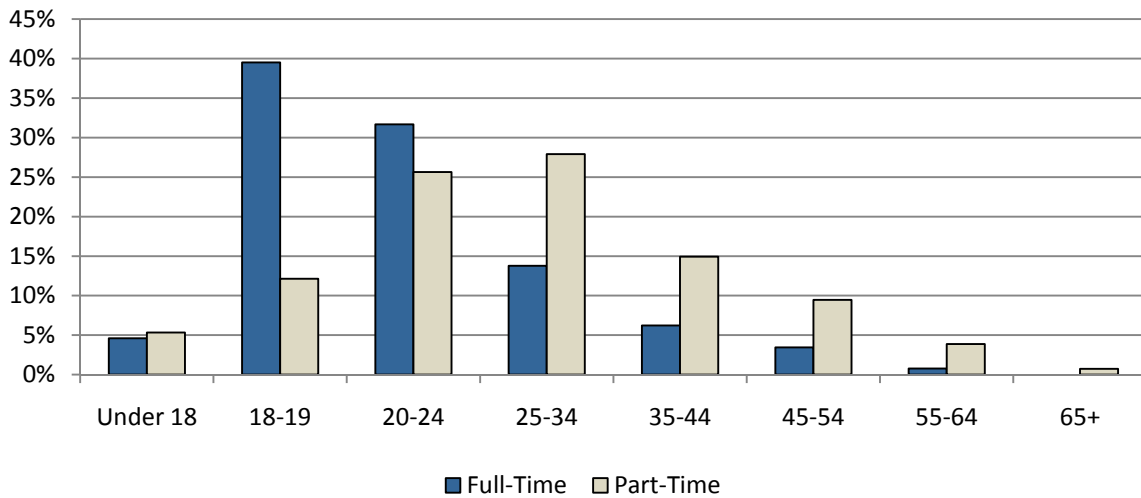
The average age of GCC students in fall 2009 remained unchanged at 27. The median age of 23 remained unchanged. The number of students aged 24 and younger increased by 11% (147 students) from fall 2008 but their proportion of total enrollment remained constant.

Figure 7: Age Category Trend



Almost 40% of full-time students are between 18 and 19 years old. This chart shows that full-time students tend to be younger than 25 years. Nearly 90% of full-time students are under age 25 compared to 71% of part-time students.

Figure 8: Age by Enrollment Status



There are also significant differences in age by gender. The age distribution for males is skewed towards ages associated with “traditional” college students.

Figure 9: Age by Gender

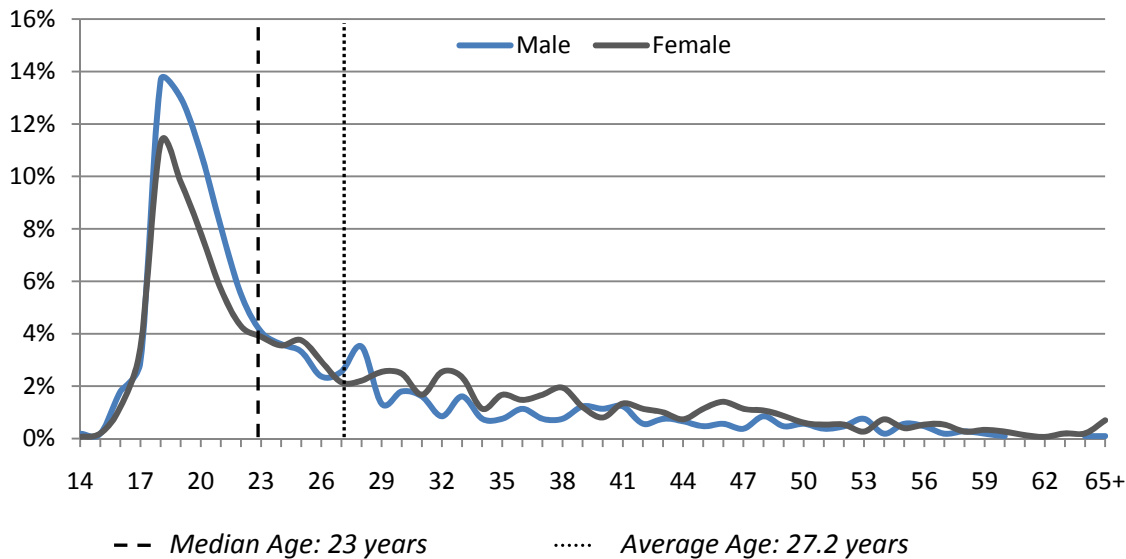


Table 4: Age by Gender & Enrollment Status

Full-Time Students				Part-Time Students			
Age Category	Male	Female	Total	Age Category	Male	Female	Total
Under 18	17	31	48	Under 18	37	43	80
18-19	193	220	413	18-19	88	94	182
20-24	182	149	331	20-24	157	228	385
25-34	65	79	144	25-34	143	276	419
35-44	21	44	65	35-44	74	150	224
45-54	18	18	36	45-54	36	106	142
55-64	5	3	8	55-64	17	41	58
65+	0	0	0	65+	1	10	11
Total	501	544	1,045	Total	553	948	1,501
Avg. Age:	23	23	23	Avg. Age:	28	31	30

Race & Ethnicity

All percentages are of those reporting ethnic status. GCC began collecting data on multi-racial students in fall 2006.

Table 5: Fall 2005-2009 Enrollment by Race/Ethnicity

	Fall 2005	Fall 2006	Fall 2007	Fall 2008	Fall 2009
African American/Non-Hispanic	3%	3%	2%	3%	3%
Asian	3%	3%	3.4%	3%	3%
Hispanic	3%	3%	3%	2%	3%
Native American	0.3%	0.5%	0.4%	0.6%	0.6%
White/Non-Hispanic	91%	90%	89%	89%	89%
Multi-Racial	NA	1%	3%	2%	2%

Figure 10: Students of Color as a % of the Total Student Body Reporting Ethnicity

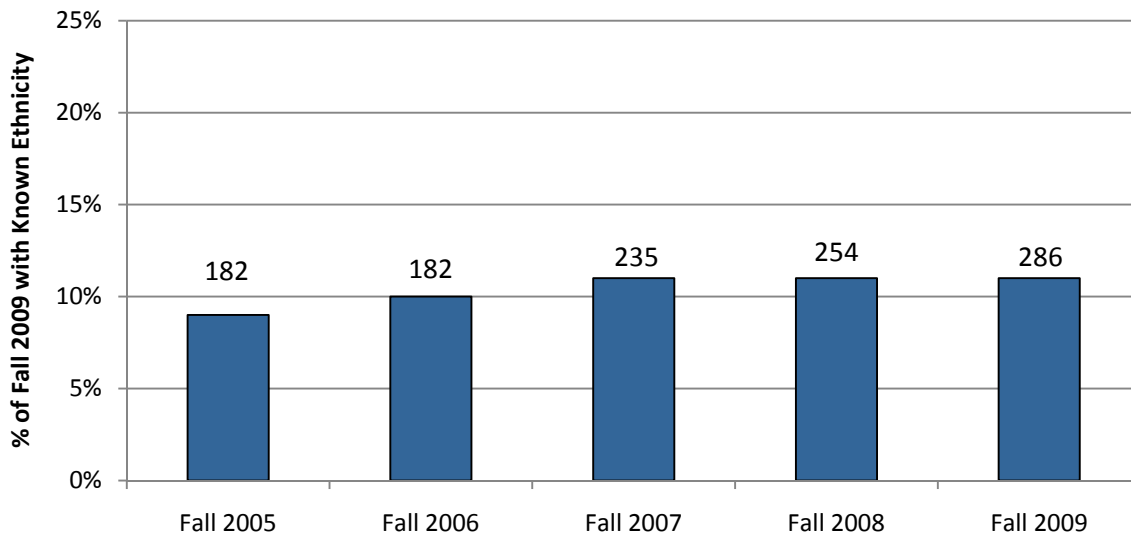
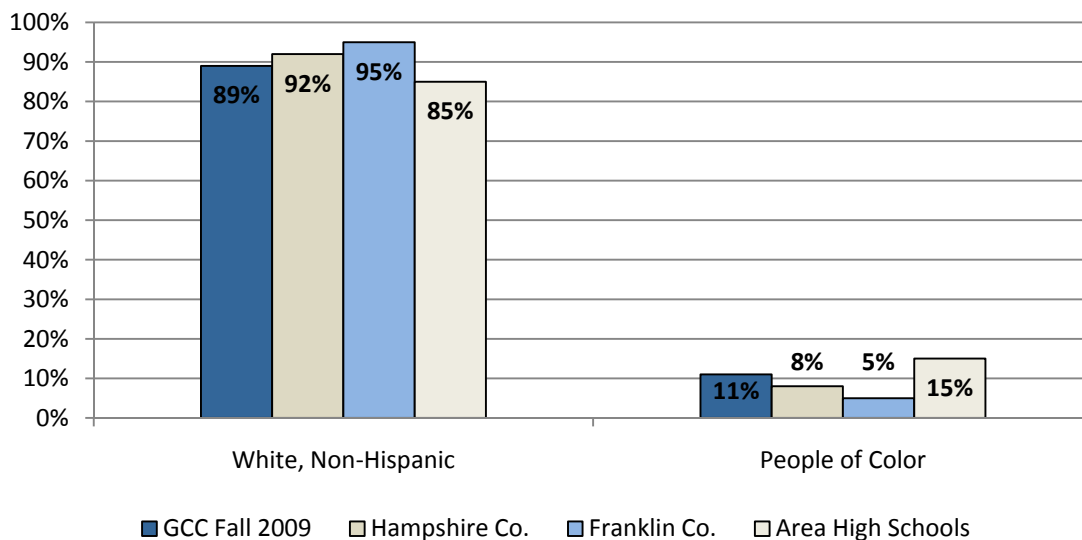


Figure 11: Race & Ethnicity Compared to Region & Area High Schools



Hampshire and Franklin County demographics are based on 2008 US Census population estimates. High school demographics are from the MA Department of Education (2008) and based on the top 10 Massachusetts high schools from which GCC students graduated.

High Schools & Residency

High Schools:

Students graduating from GED programs remain GCC's single largest source of enrollments. 123 students (5% of total fall 2009 enrollments) are dual enrollment high school students.

Table 6: Fall 2009 Enrollment by Top 15 High Schools

Rank	High School	All Students*	June 2009 HS Graduates	
			Attending GCC**	2009 HS Class of '09
1st	GED	306	22	NA
2nd	Greenfield High School	242	43	100
3rd	Mohawk Trail Regional High School	153	27	95
4th	Turners Falls High Schools	147	26	85
5th	Amherst Regional High Schools	140	22	294
6th	Frontier Regional High School	131	24	113
7th	Franklin County Technical School	126	23	119
8th	Pioneer Valley Regional High School	110	28	67
9th	Brattleboro Union High School	66	12	252
10th	Northampton High School	55	8	218
11th	Ralph C. Mahar Regional High School	38	10	107
12th	Smith Voc. Agricultural High School	35	7	120
13th	Hampshire Regional High School	31	5	140
14th	Athol High School	21	5	99
15th	Home Schooled	20	3	NA

* Regardless of year of high school graduation/admittance to GCC

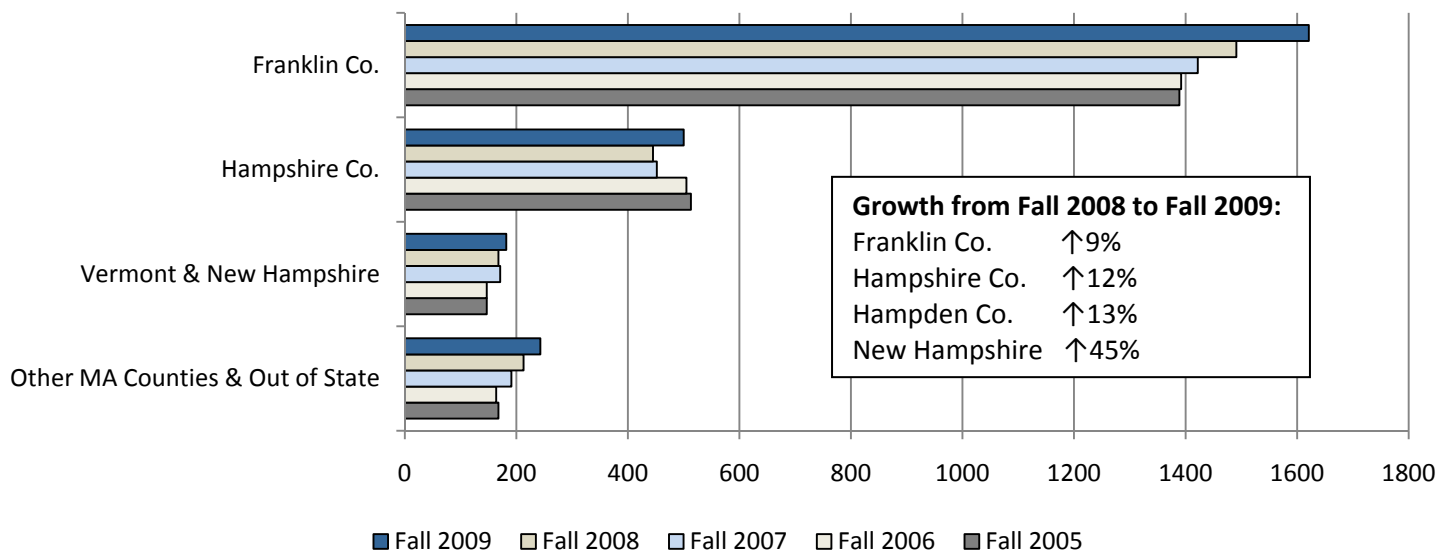
** GED graduates in the 2009 calendar year

Table 7: Fall 2009 Enrollment by County and Region

	Franklin	Hampshire	Hampden	Berkshire	Worcester	Vermont	New Hampshire	Other
# of students	1,621	500	99	9	56	137	45	79
% of fall 2009	64%	19%	4%	0.4%	2%	5%	2%	3%

The percentage of students from Franklin County (64%) has risen slightly while enrollments from Hampshire County (20%) have trended slightly lower as a percentage of total enrollments.

Figure 12: Five-Year Trend in Regional Enrollment



Regional Demographic Data

Table 9: Census Data 2000-2008

Demographic Measure	Hampshire County	Franklin County	Massachusetts	United States
2008 Est. Population	154,983	71,735	6,497,967	304,059,742
Pop. Growth 2000-2008	1.8%	0.3%	2.3%	8.0%
2007 Poverty Rate	11.6%	10.5%	10.0%	13.0%
2007 Median Household Income	\$55,340	\$51,252	\$62,383	\$50,740
% Female (2008)	53.2%	51.2%	51.5%	50.7%
% Under 18 (2008)	16.0%	18.9%	22.0%	24.3%
% Over 65 (2008)	12.5%	14.4%	13.4%	12.8%
% with BA/BS or higher (Age 25+, 2007)	41.7%	32.0%	37.1%	27.0%
% with High School degree (Age 25+, 2007)	91.6%	90.4%	87.9%	84.0%

Source: US Census Bureau

Table 10: Population Change 2000-2007 by Age

Age Group	Franklin County			Hampshire County		
	2000	2007	% Change	2000	2007	% Change
Under 5	3,725	3,436	-8%	6,943	6,069	-13%
5 To 9	4,522	3,413	-25%	8,328	6,227	-25%
10 To 14	5,346	4,297	-20%	8,938	8,241	-8%
15 To 19	4,909	4,929	0%	16,297	15,804	-3%
20 To 24	3,897	5,155	32%	18,716	21,423	14%
25 To 34	8,435	8,564	2%	18,016	17,640	-2%
35 To 44	11,971	9,627	-20%	22,836	19,364	-15%
45 To 54	12,116	12,610	4%	22,264	22,411	1%
55 To 64	6,434	9,709	51%	11,596	16,887	46%
65 And Up	10,180	10,001	-2%	18,327	18,907	3%
Median Age	39.5	41.7	6%	34.4	35.6	3%

Source: US Census Bureau

Financial Aid Awards 2008-2009 (FY09)

Table 11: Financial Aid Awards for Academic Year 2008-2009 (FY09)

Financial Aid Type	Total Awards	Recipients	Average Award
State Grants (MA & VT)	\$907,854	1664	\$ 546
Federal Grants (PELL)	\$2,129,500	854	\$ 2,493
Federal Work-Study	\$167,997	108	\$ 1,555
Federal & State Loans (MA & VT)	\$2,786,193	680	\$ 4,097
Private Loans	\$91,835	16	\$5,739
GCC College & Foundation Support	\$122,558	209	\$ 586
Private Scholarships	\$190,670	296	\$644