

Fall 2008 New Student Enrollment

This report examines new student enrollment at Greenfield Community College for fall 2008, as well as trending data for new vs. continuing students and new students by type. The new student population contains four types of enrollments: first-time students at any college, transfer students new to GCC, students formally readmitted to the college, and new non-degree students.

Key Findings:

- The number of continuing students increased steadily over the last five years.
- First-time, degree-seeking students are significantly more likely to be younger and enrolled full-time at GCC compared to other new student types and continuing students.
- Developmental course enrollments are significantly more likely for first-time, degree-seeking students compared to other new student types.

Fall 2004 to Fall 2008 New vs. Continuing Student Enrollments

Over the last five fall semesters, the proportion of new students enrolled in the fall fell from 45% in fall 2004 to 36% in fall 2008. This is a decline of 243 students. Continuing students (students enrolled in the previous semester) increased in both the proportion of the total enrollment and real numbers. Continuing students increased by 9% or 207 student since fall 2004.

Figure 1: New vs. Continuing Student Enrollment, Fall 2004-Fall2008

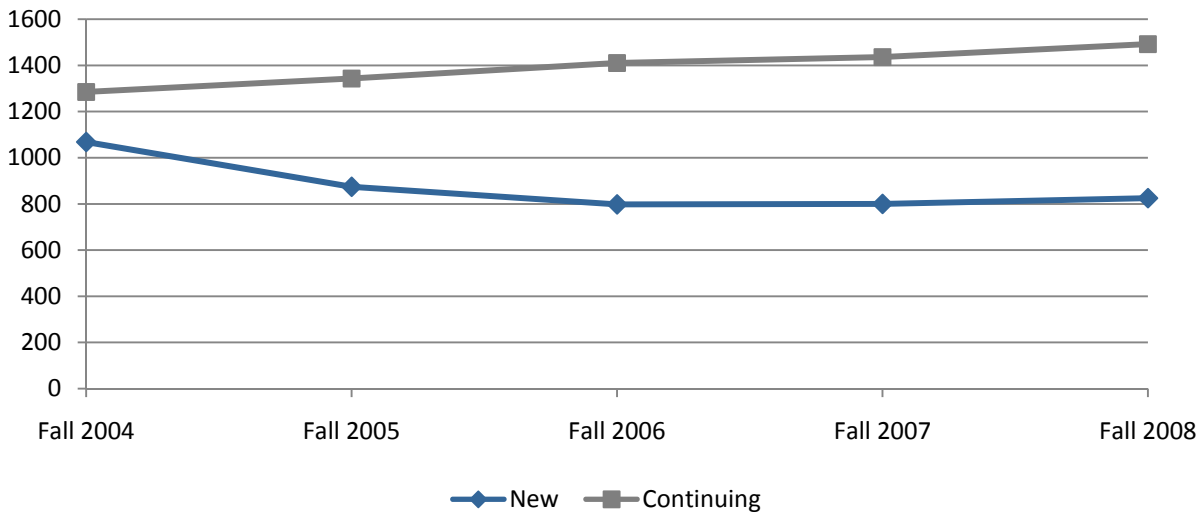


Table 1: New vs. Continuing Students, Fall 2004-Fall 2008

	Fall 2004	Fall 2005	Fall 2006	Fall 2007	Fall 2008
# New	1068	874	798	800	825
# Continuing	1,285	1,343	1,410	1,436	1,492
% New	45%	39%	36%	36%	36%
% Continuing	55%	61%	64%	64%	64%

Figure 2: New Student Type, Fall 2004-2008

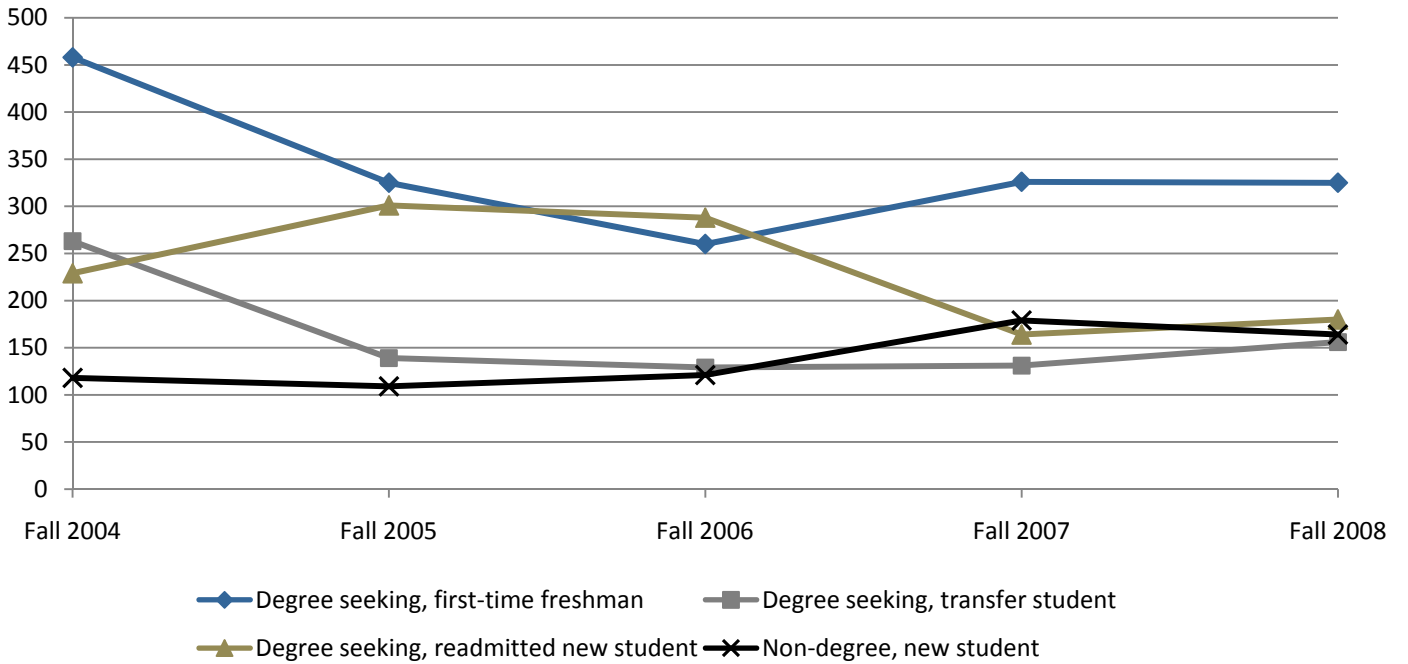


Table 2: New Student Type, Fall 2004-2008

	Fall 2004	Fall 2005	Fall 2006	Fall 2007	Fall 2008
Degree seeking, first-time freshman	458	325	260	326	325
Degree seeking, transfer student	263	139	129	131	156
Degree seeking, readmitted new student	229	301	288	164	180
Non-degree, new student	118	109	121	179	164

Figure 3: New Students by Student Type, Fall 2008

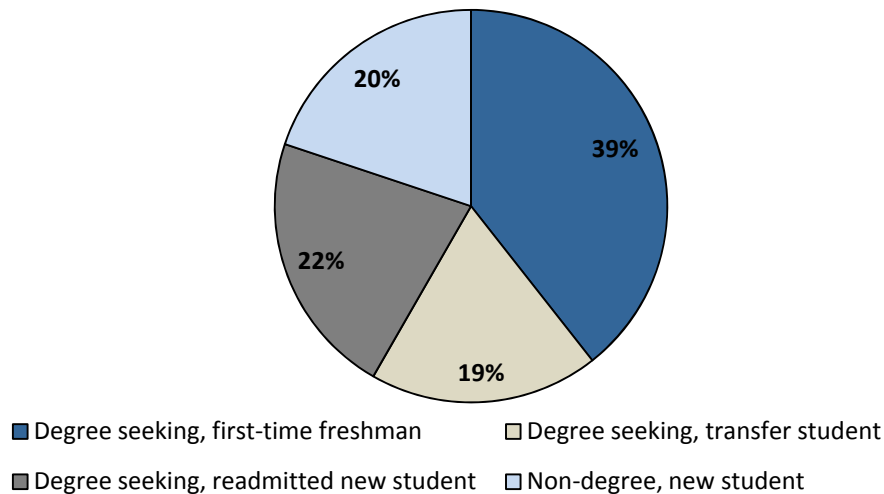
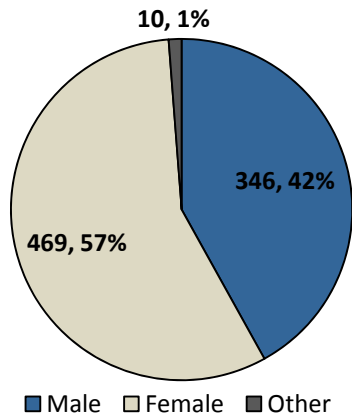
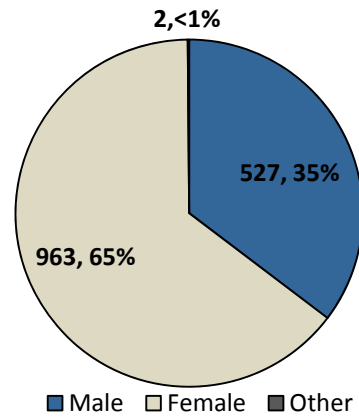


Figure 4: New vs. Continuing Students by Gender, Fall 2008

New Students



Continuing Students



There is no significant variation in gender by new student type.

There is a significant difference¹ in the average age of new and continuing students at GCC. The average age of new students is 25 years compared with 29 years for continuing students. The median age for new students in fall 2008 is 20 compared to a median age of 25 for continuing students.

Figure 5: New vs. Continuing Students Age Profile, Fall 2008

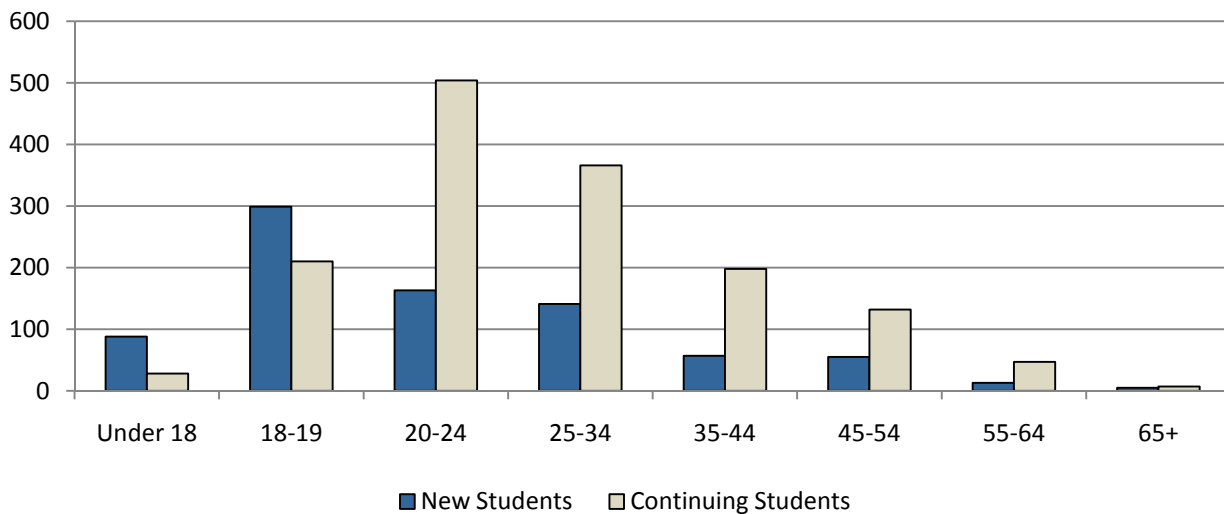


Table 3: New & Continuing Students by Age Category, Fall 2008

	New Students		Continuing Students	
	# of Students	% of New Students	# of Students	% of Continuing Students
Under 18	88	11%	28	2%
18-19	299	36%	210	14%
20-24	163	20%	504	34%
25-34	141	17%	366	25%
35-44	57	7%	198	13%
45-54	55	7%	132	9%
55-64	13	2%	47	3%
65+	5	<1%	7	<1%
Total	821*	100%	1492	100%

* Note: Four new students have unknown dates of birth and are not included in this table.

¹ Significance established using a paired sample t-test at the 99% confidence interval.

There are significant variations in the average age of new student types. Transfer, readmitted and non-matriculated students have an average age closer to the average for continuing students. The average age of degree-seeking, first-time freshmen is 21, eight years younger than the average for continuing students.

Table 4: Average Age by New Student Type and Continuing Students

New Student Type	Mean	Std. Deviation
Degree seeking, first-time freshman	21.3	7.0
Degree seeking, transfer student	28.2	9.6
Degree seeking, readmitted new student	27.9	11.9
Non-degree, new student	26.5	13.7
All New Students	25.1	10.7
All Continuing Students	29.0	11.2

Fall 2008 New Student Academic Characteristics

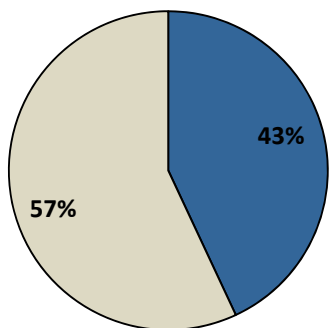
New students in fall 2008 are more likely to have full-time status than continuing students.

Table 5: Fall 2008 New vs. Continuing Students by Enrollment Status

	New Students	Continuing Students
Full-Time	355	518
Part-Time	470	974

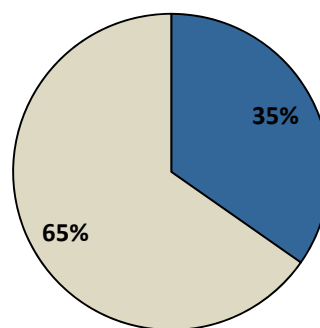
Figure 6: Fall 2008 New vs. Continuing Students by Enrollment Status

New Students



■ Full-Time □ Part-Time

Continuing Students



■ Full-Time □ Part-Time

There is significant variation in enrollment status by new student types. Among degree-seeking new students, 60% of first-time freshmen are enrolled full-time compared with 38% of transfer students and 43% readmitted students. Most (86%) non-degree students attend part time.

Table 6: Enrollment Status by New Student Type & Continuing Students

		Full-Time	Part-Time
Degree seeking, first-time freshman	Count	195	130
	Percent	60%	40%
Degree seeking, transfer student	Count	59	97
	Percent	38%	62%
Degree seeking, readmitted new student	Count	78	102
	Percent	43%	57%
Non-degree, new student	Count	23	141
	Percent	14%	86%
All Continuing Students	Count	518	974
	Percent	35%	65%

Table 7 reports the average credits attempted in fall 2008 by student type. Non-degree students attempt fewer hours of coursework than other new student types.

Table 7: Attempted Credits for by Student Type, Fall 2008

	Mean	Std. Deviation
Degree seeking, first-time freshman	10.6	3.4
Degree seeking, transfer student	9.1	4.2
Degree seeking, readmitted new student	9.6	4.2
Non-degree, new student	5.8	3.7
All New Students	9.2	4.2
All Continuing Students	8.7	3.9

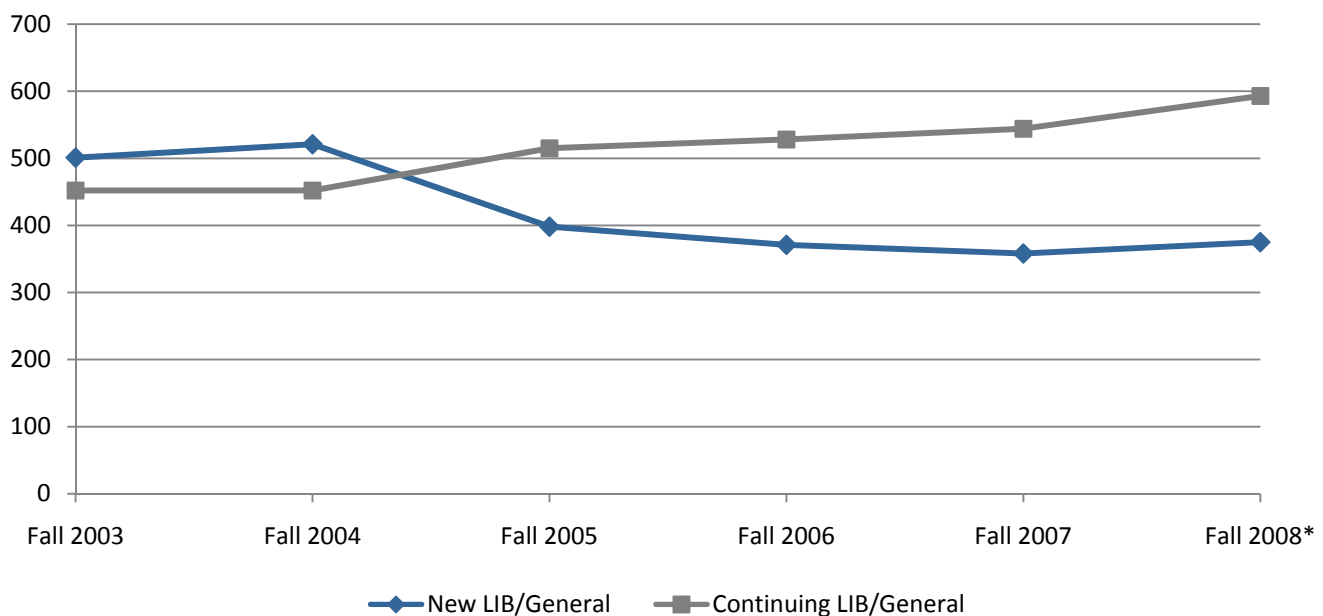
Table 8 presents GCC programs with 10 or more new students in fall 2008.

Table 8: New Student Enrollment by Type for Programs with 10 or More New Students, Fall 2008

Program	First-time	Transfer	Readmitted	Total New Students
Liberal Arts/General	147	47	56	250
Liberal Arts/ Health Sciences	45	40	40	125
Criminal Justice	17	3	6	28
Renewable Energy/Energy Efficiency	5	11	8	24
Early Childhood Education	10	1	12	23
Business Admin. Transfer	10	4	5	19
Fine Arts	11	4	3	18
Paramedic	0	10	7	17
Management	5	3	4	12
Liberal Arts/Music	9	1	1	11
Outdoor Leadership	2	3	6	11
Media Arts	6	5	0	11

The Liberal Arts General Program trend shows a change from fall 2003 with continuing students comprising a higher proportion than new students as was the pattern in the past.

Figure 7: Liberal Arts/General Enrollment by Student Type, Fall 2003-Fall 2008



* Note: The new Liberal Arts/Health Science (LAH) option is included in the fall 2008 LIB figures to allow for comparisons to past years.

Fall 2008 New Student Course Enrollments

Almost half (398) of all new students enrolled in at least one Gateway course in fall 2008. Gateway courses are courses with the highest enrollment for all students for the 2007-2008 academic year.

Figure 8: New Student Gateway Course Enrollment, Fall 2008

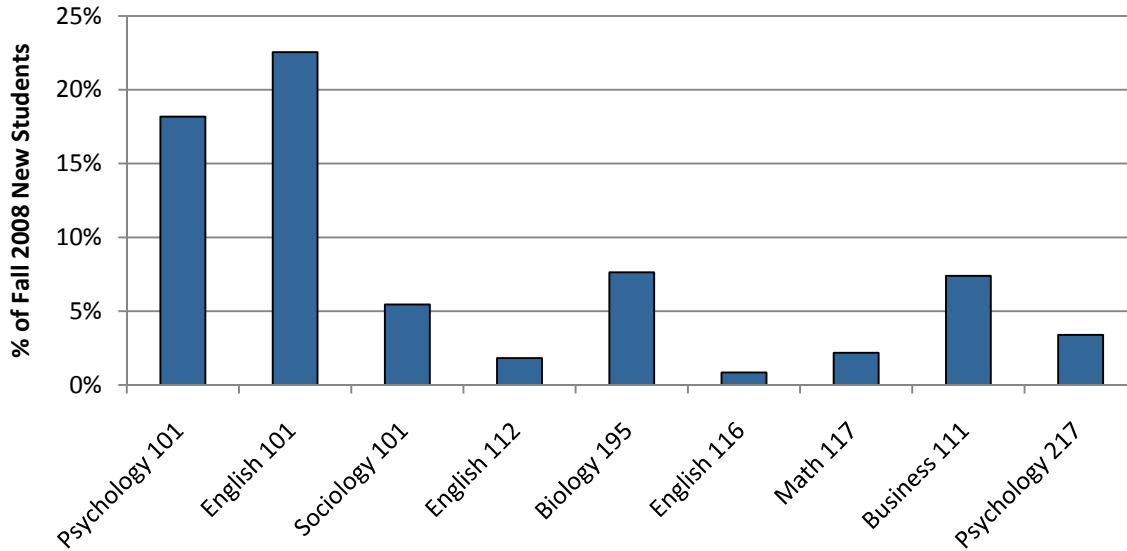


Table 10 reports developmental course enrollments for fall 2008 new students. This table reports students enrolled in developmental courses, and should not be confused with the number that tested into developmental courses based on college placement test scores. The overall developmental course prevalence (taking any developmental course) was 11% for new students in fall 2008; 11% of new students enrolled in at least one developmental course in fall 2008.

Table 9: Developmental Course Prevalence for New Students, Fall 2008

Course	Enrollments	% of New Students
College 090	63	7.6%
English 090	89	10.8%
Math 090	79	9.6%
Math 094	4	0.5%
At least one Developmental Course	91	11.0%

There are significant variations in developmental course prevalence by new student type. Almost one-third of first-time freshmen are enrolled in at least one developmental course.

Table 10: Developmental Course Prevalence by Student Type (% within Type)

	Degree seeking, first-time freshman		Degree seeking, transfer student		Degree seeking, readmitted new student		Non-degree, new student	
	Number	Percent	Number	Percent	Number	Percent	Number	Percent
College 090	53	16%	2	1%	6	3%	2	1%
English 090	64	20%	2	1%	14	8%	9	5%
Math 090	51	16%	9	6%	16	9%	3	2%
Math 094	3	1%	0	0%	1	1%	0	0%
Any Developmental	100	31%	10	6%	23	13%	11	7%

Figure 9: Developmental Course Prevalence by Student Type

